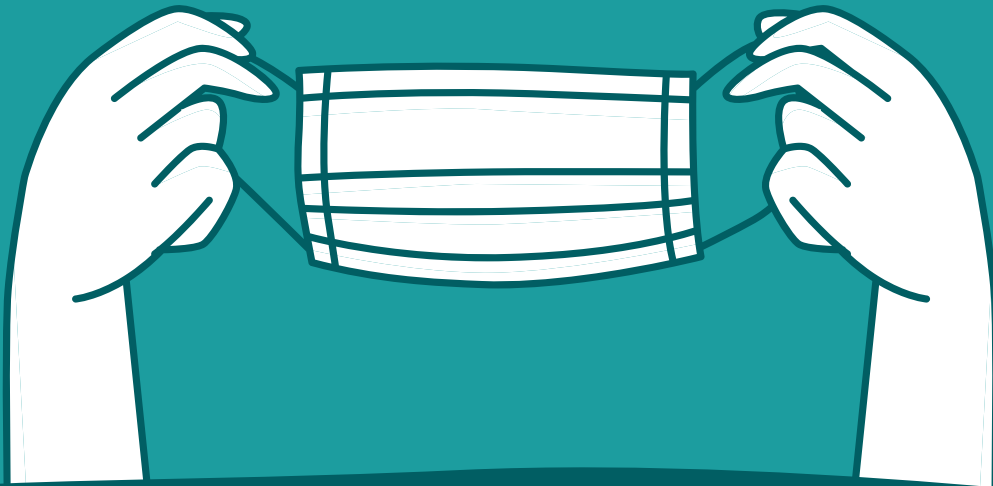


DON'T BE A DISCRIMINATOR!

YOU Could Receive A £9,000 Fine!

Equality Act 2010



Did You Know?

- ✓ It's an offence to ask for proof of medical exemption
- ✓ Government guidelines states you should NOT challenge members of the public for proof
- ✓ Members of the public are NOT required to display a lanyard or proof of exemption from a GP
- ✓ Refusing entry based upon a disability is an offence which YOU are personally liable for
- ✓ Company policy does NOT supercede the Equality Act 2010
- ✓ Legal action will be taken against those who discriminate against someone with a medical exemption and carries a fine from £900 to £9,000